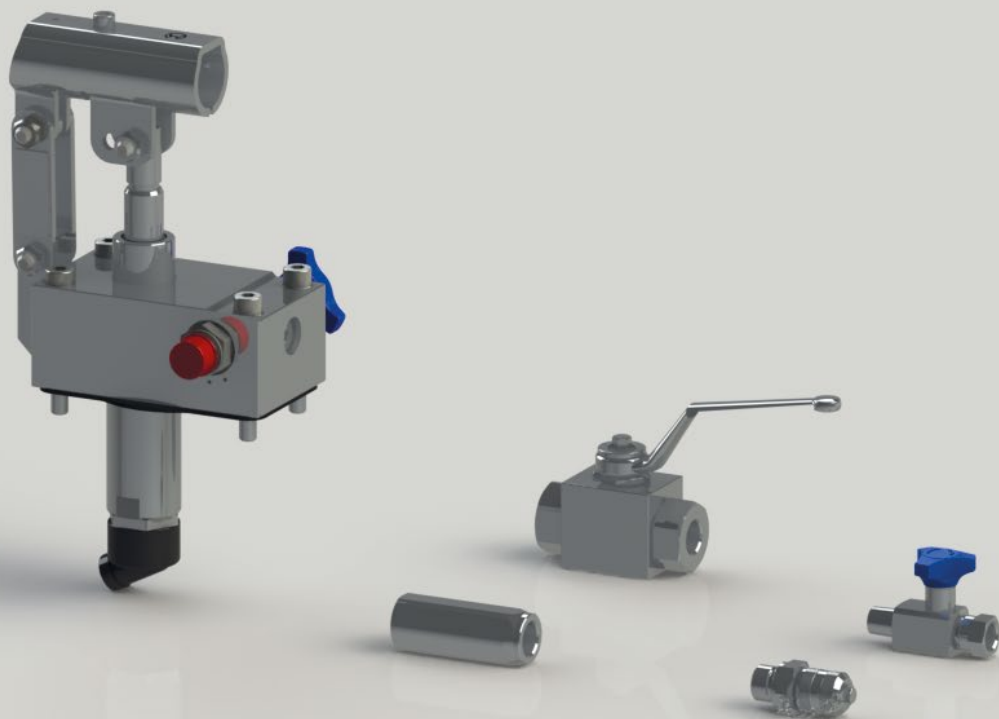


Woleweb

HYDRAULIC VALVES AND COMPONENTS

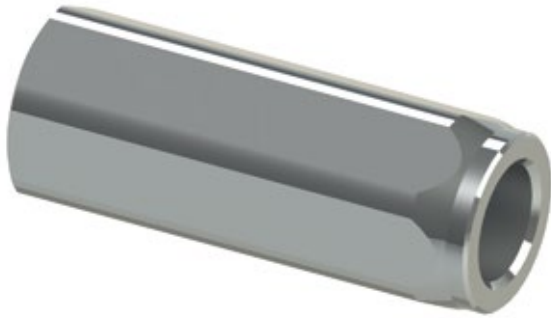


STAINLESS STEEL

ACCIAIO INOSSIDABILE

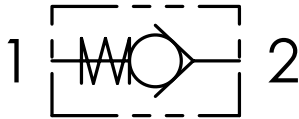
Fluidi	Fluids	
Acetone	Acetone	R
Acetiene	Acetylene	R
Birra	Beer	R
Benzene	Benzene	R
Benzina	Benzine	R
Bitume	Bitumen	R
Cloroformio	Chloroform	R
Caffe	Coffee	LR
Olio Diesel	Diesel oil	R
Dimetilchetone	Dimethyl Ketone	R
Cloruro di Ferro	Ferric Chloride	R
Succo di frutta	Fruit Juices	R
Gasolio	Gasoline	R
Gelatina	Gelatine	R
Glucosio	Glucose	R
Glicerina	Glycerine	R
Glicole	Glycol	R
Grasso	Grease	R
Inchiostro	Ink	R
Cherosene	Kerosene	R
Cloruro di magnesio	Magnesium Chloride	LR
Margarina	Margarine	R
Mercurio	Mercury	R
Latte	Milk	R
Nafta	Naphta	R
Naptalina	Naphtalene	LR
Olio di oliva	Olive oil	R
Olio di paraffina	Paraffin oil	R
Fenolo liquido	Phenol aqueous	R
Solfato di potassio	Potassium sulphate	LR
Acqua di mare	Sea water	R
Olio di silicone	Silicone oil	R
Cloruro di sodio 10%	Sodium chloride 10%	LR
Nitrato di sodio 10%	Sodium nitrate 10%	R
Solvente	Solvent	R
Urea liquido	Urea aqueous	LR
Vaselina	Vaseline	R
Olio vegetale	Vegetable oil	R
Acqua fredda	Water cold	R
Acqua distillata	Water distilled	R
Acqua calda	Water hot	R
Cloruro di zinco	Zinc Chloride 10 %	LR

Legenda/Legend		
Resistente	Resistant	R
Resistenza limitata	Limited Resistance	LR
Non Resistente	Not resistant	-



Codice ordinazione Ordering code	01	02	03	04
XVUR				

Schema idraulico - Hydraulic circuit

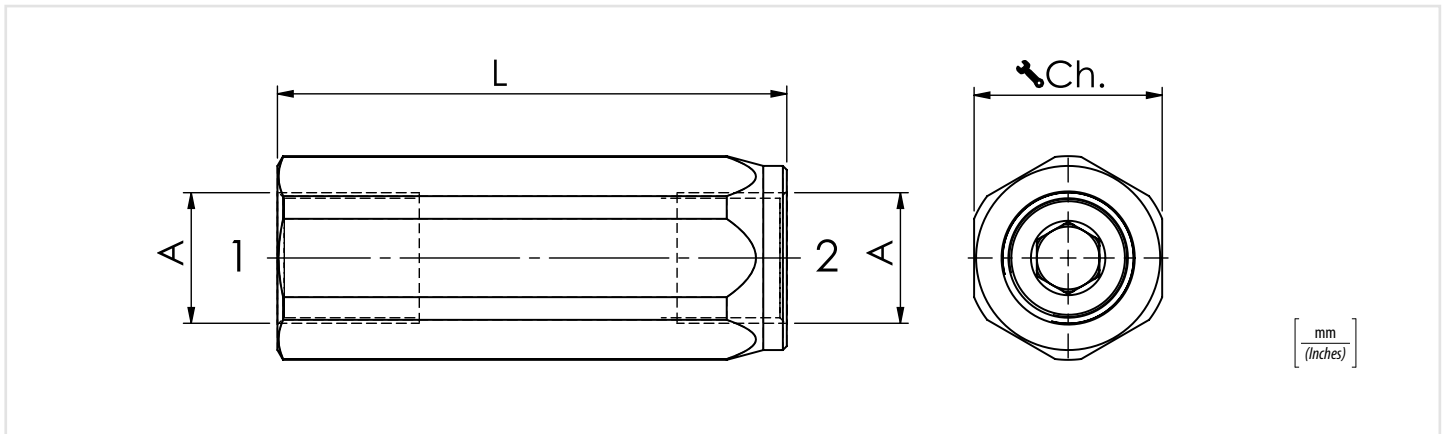
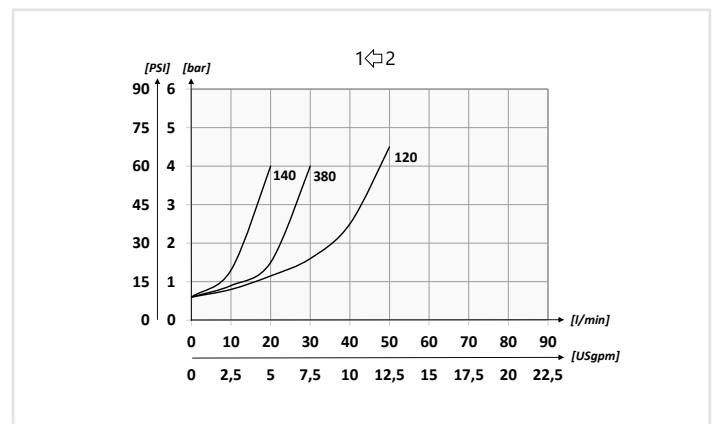


01	Valvole unidirezionali a colonnetta F/F (F/F check housing valves)	XVUR
02	Dimensione (Size)	BSPP 1/4 140
		BSPP 3/8 380
		BSPP 1/2 120
03	Tenuta (Sealing)	Tenuta a cono (Poppet sealing) SP
04	Molla (Spring)	1 bar Standard (14.5 PSI) 1

Dati tecnici - Technical data

Particolare / Component	Materiale / Material
Corpo / Body	1.4404 (AISI 316L)
Molla / Spring	1.4404 (AISI 316L)
Otturatore / Poppet	1.4404 (AISI 316L)
Spingimolla / Spring Spacer	1.4404 (AISI 316L)

Performances

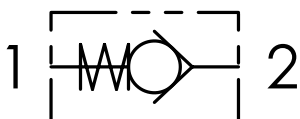


Caratteristiche tecniche - Technical characteristics

Tipo Type	A	Portata Max (l/min) Max flow (USgpm)	Pressione max (bar) Max Pressure (PSI)	L	Ch.	Peso approssimativo (kg) Approx weight (lb)
XVUR140	BSPP 1/4	15 (4.0)	400 (5800)	55 (2.17)	19	0,10 (0.22)
XVUR380	BSPP 3/8	30 (7.9)		65 (2.56)	24	0,18 (0.40)
XVUR120	BSPP 1/2	50 (13.2)		75 (2.95)	27	0,23 (0.50)



Schema idraulico - Hydraulic circuit



Codice ordinazione
Ordering code

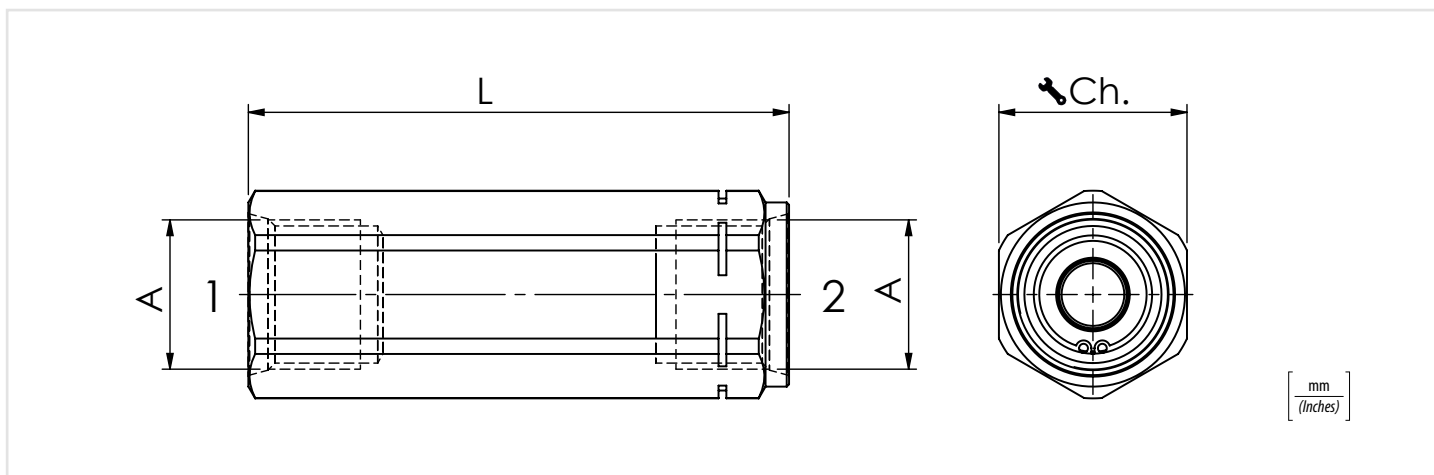
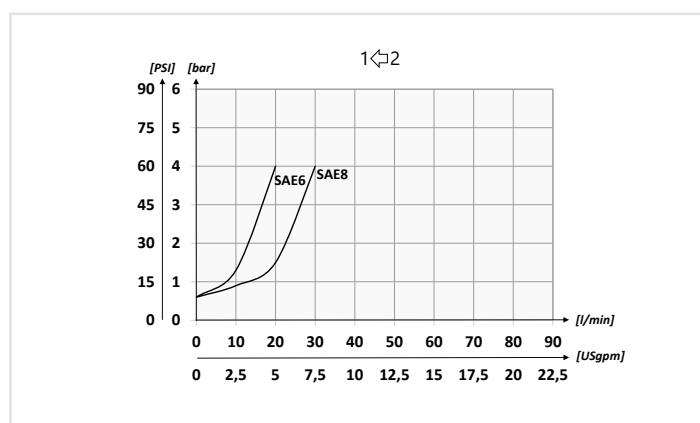
01	02	03	04
XVUR		SP	

01	Valvole unidirezionali a colonnetta F/F (F/F check housing valves)	XVUR
02	Dimensione (Size)	9/16-18UNF 6
		3/4-16UNF 8
03	Tenuta (Sealing)	Tenuta a cono (Poppet sealing) SP
04	Molla (Spring)	0,5 bar Standard (7.25 PSI) 0,5

Dati tecnici - Technical data

Particolare / Component	Materiale / Material
Corpo / Body	1.4404 (AISI 316L)
Molla / Spring	1.4404 (AISI 316L)
Otturatore / Poppet	1.4404 (AISI 316L)
Spingimolla / Spring Spacer	1.4404 (AISI 316L)

Performances

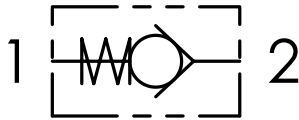


Caratteristiche tecniche - Technical characteristics

Tipo Type	A	Portata Max (l/min) Max flow (USgpm)	Pressione max (bar) Max Pressure (PSI)	L	Ch.	Peso approssimativo(kg) Approx weight (lb)
XVUR6	9/16-18UNF	30 (7.9)	400 (5800)	58 (2.28)	19	0,09 (0.20)
XVUR8	3/4-16UNF	50 (13.2)		69 (2.71)	24	0,18 (0.40)



Schema idraulico - Hydraulic circuit



Codice ordinazione
Ordering code

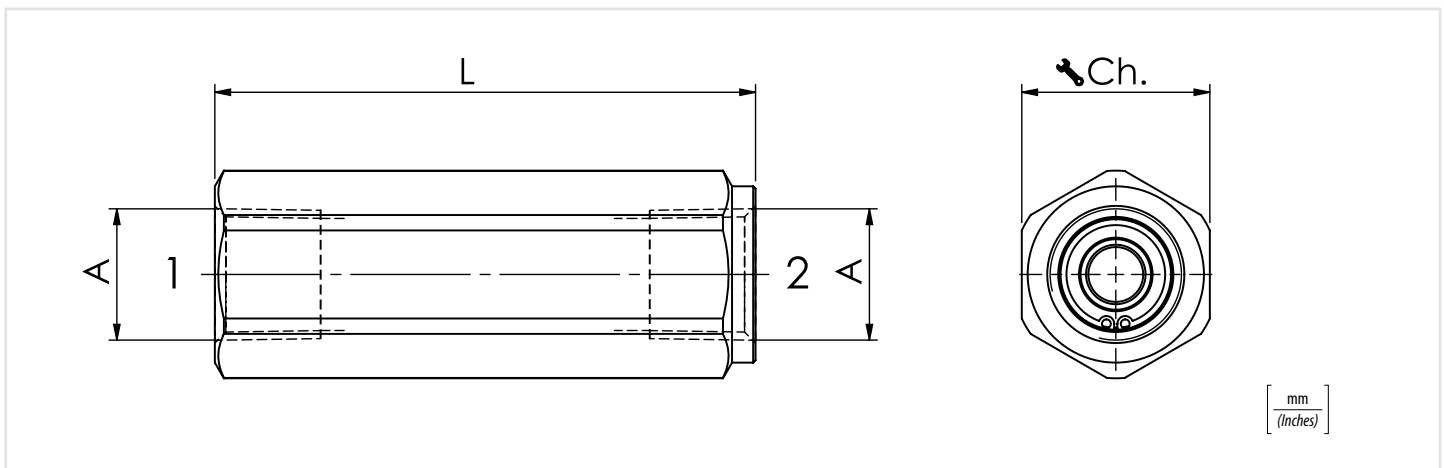
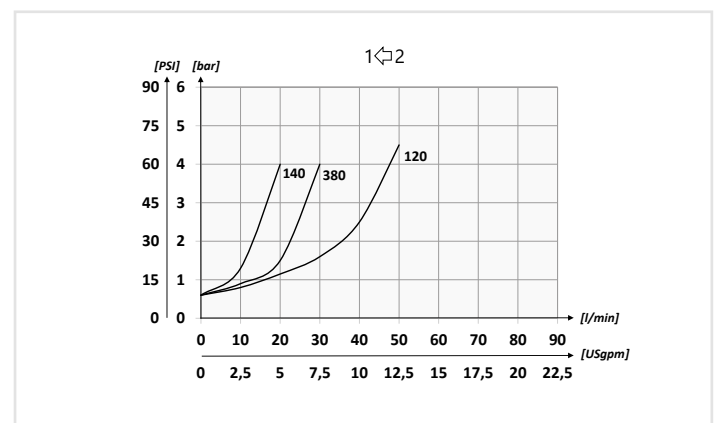
01	02	03	04	05
XVUR		N	SP	

01	Valvole unidirezionali a colonnetta F/F (F/F check housing stainless)	XVUR
02	Dimensione (Size)	1/4 NPTF
		3/8 NPTF
		1/2 NPTF
03	Filettatura (Thread)	NPTF
04	Tenuta (Sealing)	Tenuta a cono (Poppet sealing)
05	Molla (Spring)	0,5 bar Standard (7.25 PSI)

Dati tecnici - Technical data

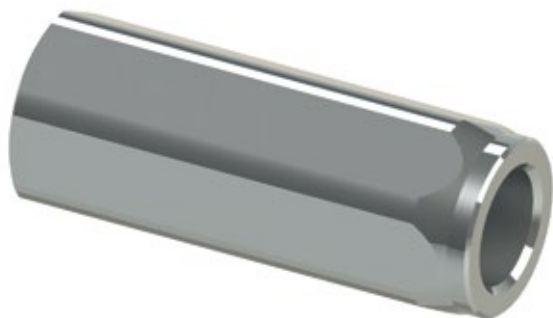
Particolare / Component	Materiale / Material
Corpo / Body	1.4404 (AISI 316L)
Molla / Spring	1.4404 (AISI 316L)
Otturatore / Poppet	1.4404 (AISI 316L)
Spingimolla / Spring Spacer	1.4404 (AISI 316L)

Performances



Caratteristiche tecniche - Technical characteristics

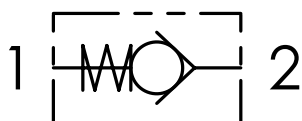
Tipo Type	A	Portata Max (l/min) Max flow (USgpm)	Pressione max (bar) Max Pressure (PSI)	L	Ch.	Peso approssimativo (kg) Approx weight (lb)
XVUR140N	1/4 NPTF	15 (4)	400 (5800)	58 (2.28)	19	0,10 (0.22)
XVUR380N	3/8 NPTF	30 (7.9)		69 (2.72)	24	0,18 (0.40)
XVUR120N	1/2 NPTF	50 (13.2)		75 (2.95)	27	0,23 (0.50)



Codice ordinazione
Ordering code

01	02	03	04
YVUR			

Schema idraulico - Hydraulic circuit

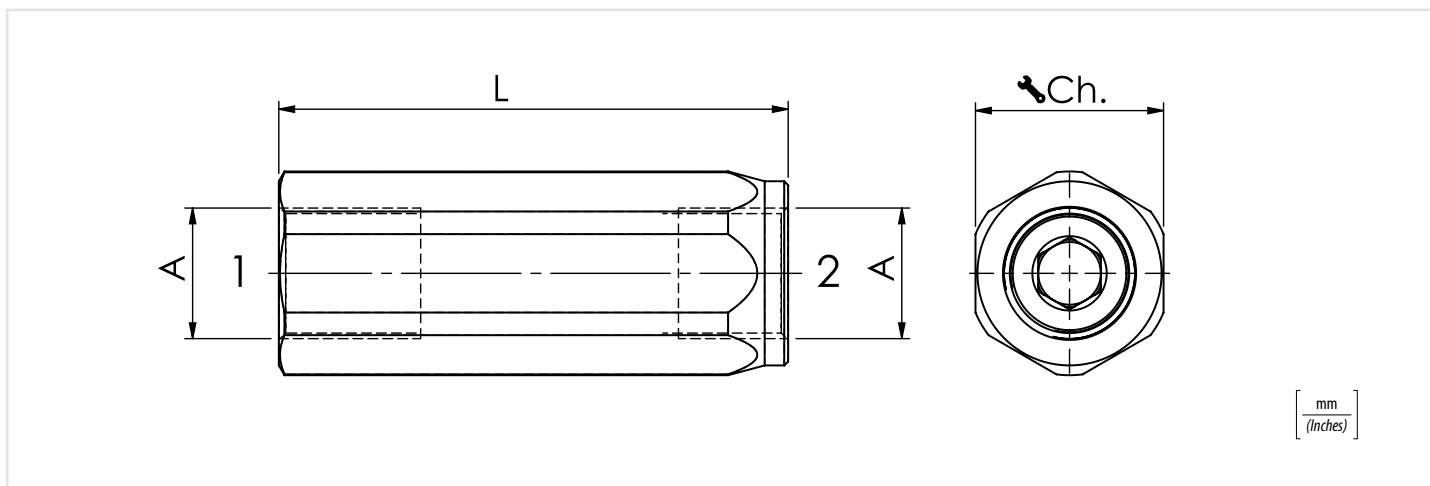
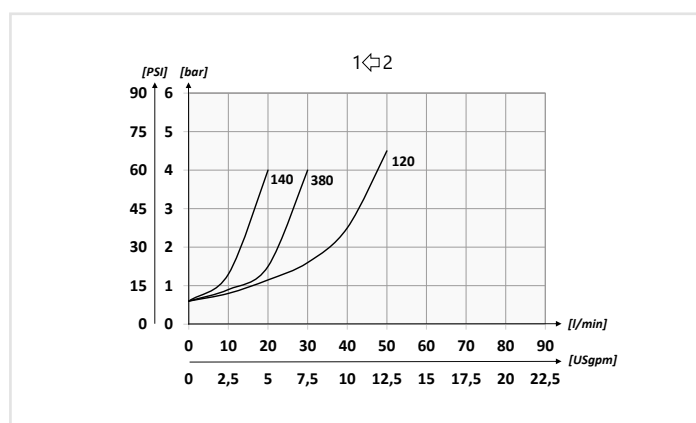


01	Valvole unidirezionali a colonnetta F/F, solo corpo in acciaio inox (F/F check housing valves, only stainless steel body)	YVUR
02	Dimensione (Size)	BSPP 1/4 140
		BSPP 3/8 380
		BSPP 1/2 120
03	Tenuta (Sealing)	Tenuta a cono (Poppet sealing) SP
04	Molla (Spring)	1 bar Standard (14.5 PSI) 1
		3 bar Standard (43.5 PSI) 3
		4,5 bar Standard (65.25 PSI) 4,5
		6 bar Standard (87 PSI) 6

Dati tecnici - Technical data

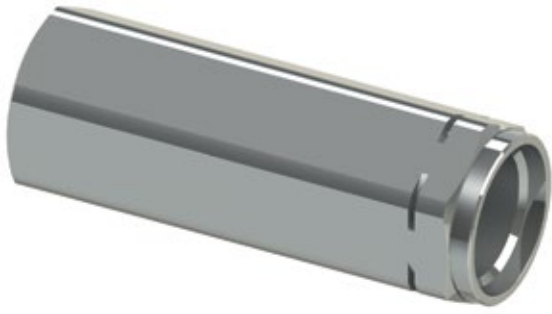
Particolare / Component	Materiale / Material
Corpo / Body	1.4404 (AISI 316L)
Molla / Spring	1.0116 (OTEVA 70)
Otturatore / Poppet	1.5715 (Ng 2)
Spingimolla / Spring Spacer	1.0737 (AVPb)

Performances

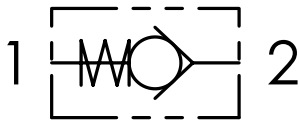


Caratteristiche tecniche - Technical characteristics

Tipo Type	A	Portata Max (l/min) Max flow (USgpm)	Pressione max (bar) Max Pressure (PSI)	L	Ch.	Peso approssimativo (kg) Approx weight (lb)
YVUR140	BSPP 1/4	15 (4.0)	400 (5800)	55 (2.17)	19	0,10 (0.22)
YVUR380	BSPP 3/8	30 (7.9)		65 (2.56)	24	0,18 (0.40)
YVUR120	BSPP 1/2	50 (13.2)		75 (2.95)	27	0,23 (0.50)



Schema idraulico - Hydraulic circuit



Codice ordinazione
Ordering code

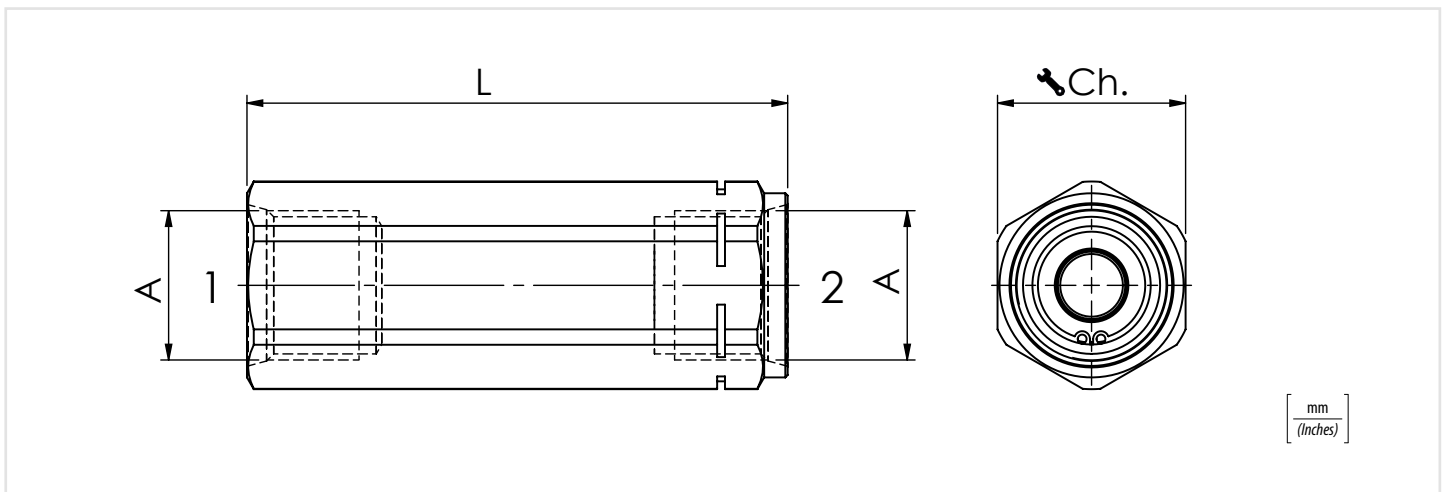
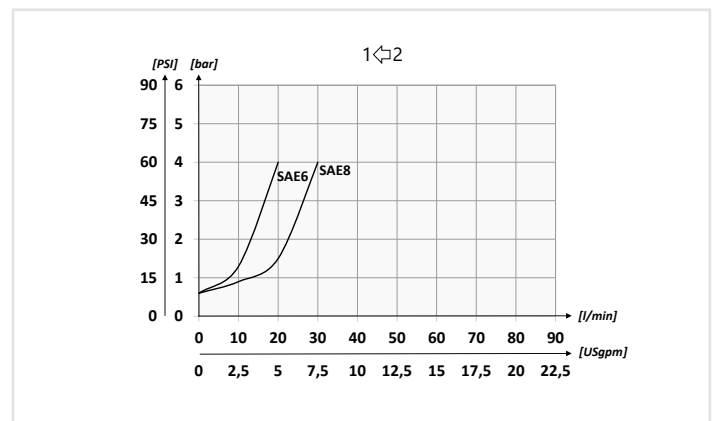
01	02	03	04
YVUR		SP	

01	Valvole unidirezionali a colonnetta F/F, solo corpo in acciaio inox (F/F check housing valves, only stainless steel body)		YVUR
02	Dimensione (Size)	9/16-18UNF	6
		3/4-16UNF	8
03	Tenuta (Sealing)	Tenuta a cono (Poppet sealing)	SP
04	Molla (Spring)	0,5 bar Standard (7.25 PSI)	0,5
		3 bar Standard (43.5 PSI)	3
		4,5 bar Standard (65.25 PSI)	4,5
		6 bar Standard (87 PSI)	6

Dati tecnici - Technical data

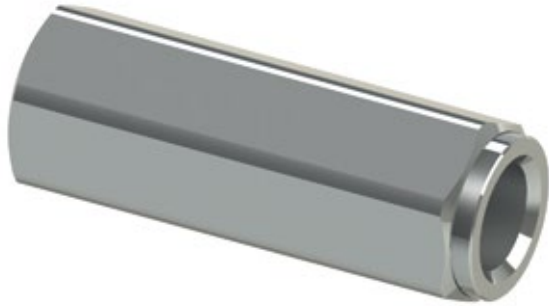
Particolare / Component	Materiale / Material
Corpo / Body	1.4404 (AISI 316L)
Molla / Spring	1.0116 (OTEVA 70)
Otturatore / Poppet	1.5715 (Ng 2)
Spingimolla / Spring Spacer	1.0737 (AVPb)

Performances

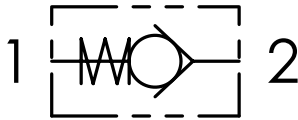


Caratteristiche tecniche - Technical characteristics

Tipo Type	A	Portata Max (l/min) Max flow (USgpm)	Pressione max (bar) Max Pressure (PSI)	L	Ch.	Peso approssimativo(kg) Approx weight (lb)
YVUR6	9/16-18UNF	15 (4)	400 (5800)	58 (2.28)	19	0,09 (0.20)
YVUR8	3/4-16UNF	30 (7.9)		69 (2.71)	24	0,18 (0.40)



Schema idraulico - Hydraulic circuit



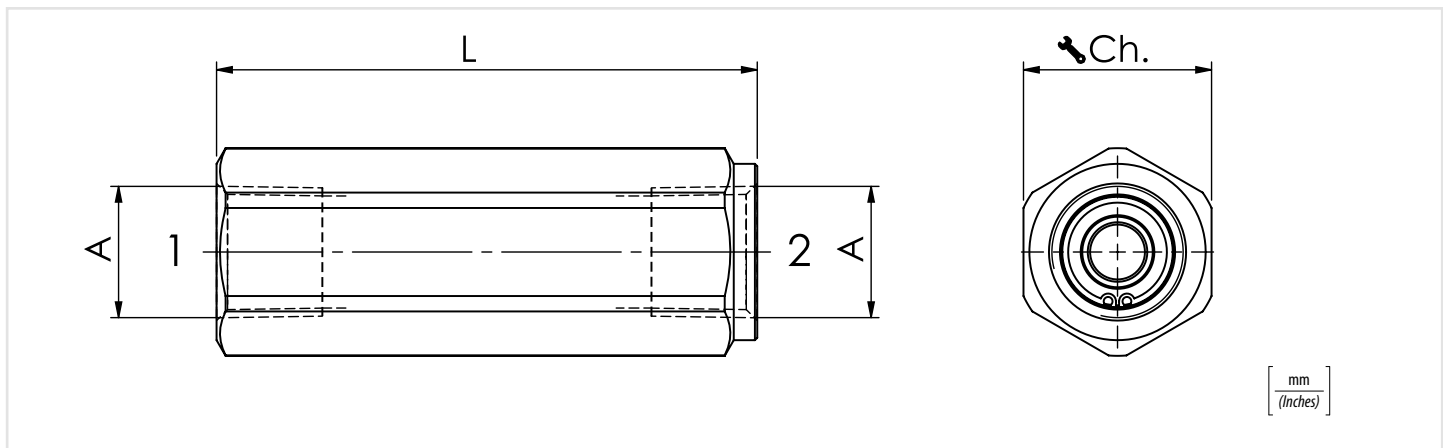
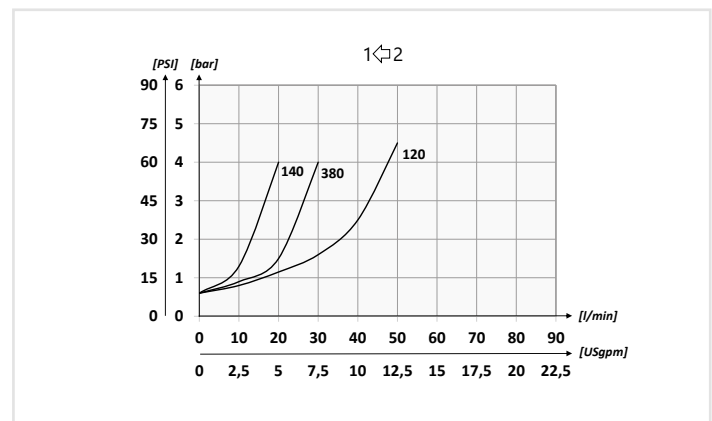
Codice ordinazione Ordering code	01	02	03	04	05
	YVUR		N	SP	

01	Valvole unidirezionali a colonnetta F/F, solo corpo in acciaio inox (F/F check housing valves, only stainless steel body)		YVUR
02	Dimensione (Size)	1/4 NPTF	140
		3/8 NPTF	380
		1/2 NPTF	120
03	Filettatura (Thread)	NPTF	N
04	Tenuta (Sealing)	Tenuta a cono (Poppet sealing)	SP
05	Molla (Spring)	0,5 bar Standard (7.25 PSI)	0,5
		3 bar (43.5 PSI)	3
		4,5 bar (65.25 PSI)	4,5
		6 bar (87 PSI)	6

Dati tecnici - Technical data

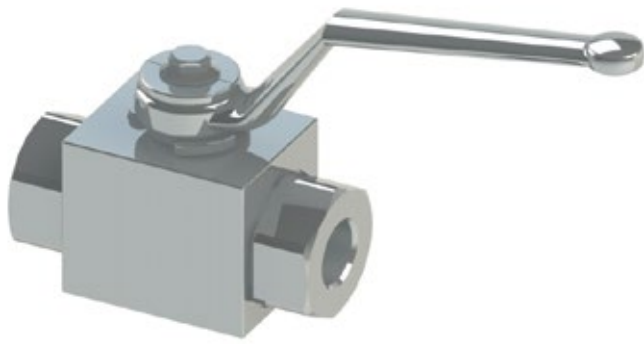
Particolare / Component	Materiale / Material
Corpo / Body	1.4404 (AISI 316L)
Molla / Spring	1.0116 (OTEVA 70)
Otturatore / Poppet	1.5715 (Ng 2)
Spingimolla / Spring Spacer	1.0737 (AVPb)

Performances

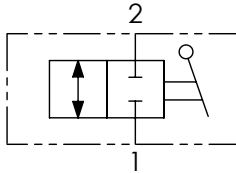


Caratteristiche tecniche - Technical characteristics

Tipo type	A	Portata Max (l/min) Max flow (USgpm)	Pressione max (bar) Max Pressure (PSI)	L	Ch.	Peso approssimativo (kg) Approx weight (lb)
YVUR140N	1/4 NPTF	5 (1.3)	400 (5800)	58 (2.28)	19	0,10 (0.22)
YVUR380N	3/8 NPTF	15 (4)		69 (2.72)	24	0,18 (0.40)
YVUR120N	1/2 NPTF	30 (7.9)		75 (2.95)	27	0,23 (0.50)



Schema idraulico - Hydraulic circuit



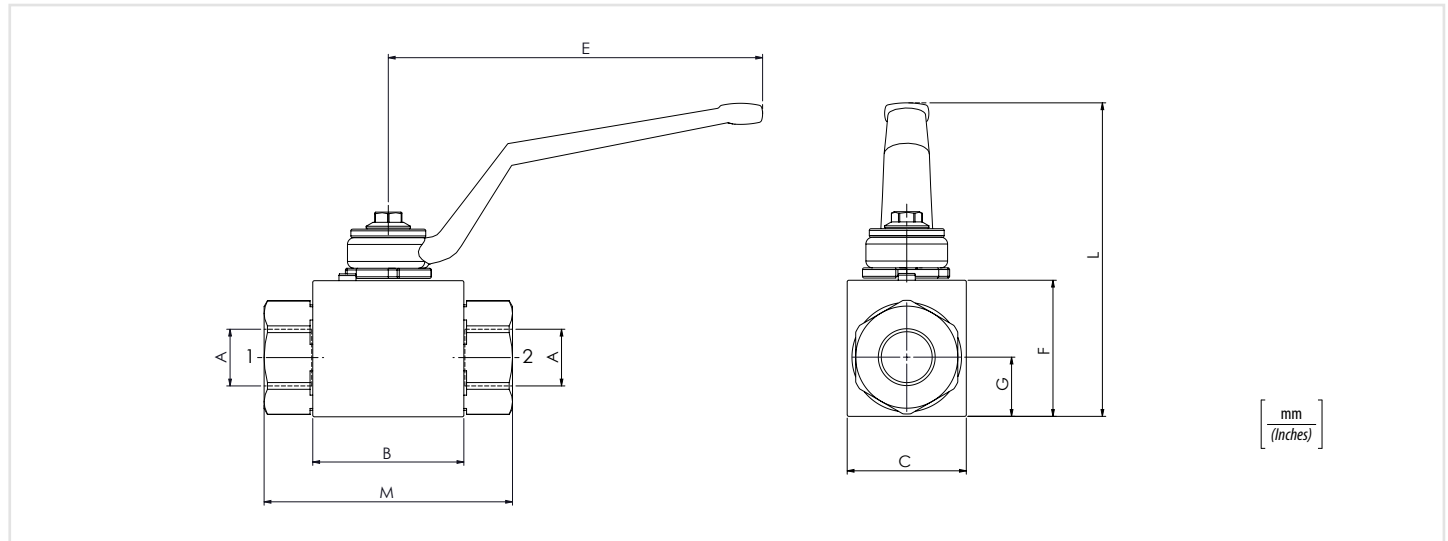
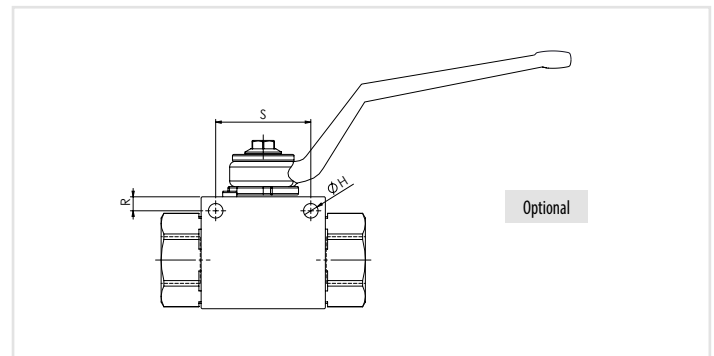
Codice ordinazione
Ordering code

01	02	03
XRAS2		

01	Valvole a sfera a 2 vie (2 ways ball valves)	XRAS2
02	Dimensione (Size)	BSPP 1/4 140
		BSPP 3/8 380
		BSPP 1/2 120
		BSPP 3/4 340
		BSPP 1 100
03	Optional	Fori di fissaggio (Fixing ports) P

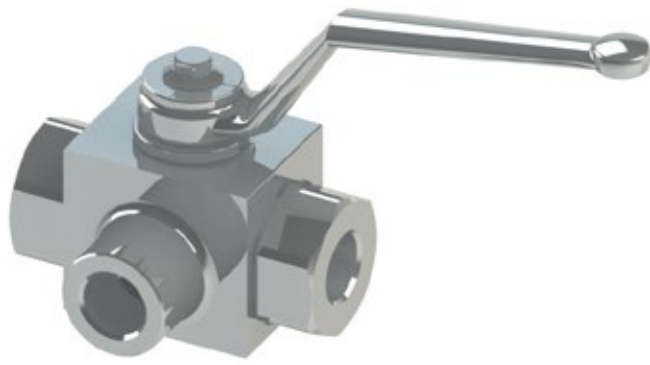
Dati tecnici - Technical data

Particolare / Component	Materiale / Material
Corpo / Body	1.4404 (AISI 316L)
Adattatori / Adapter	1.4404 (AISI 316L)
Sfera / Ball	1.4404 (AISI 316L)
Vite regolatrice / Stern	1.4404 (AISI 316L)
Battuta sfera / Ball seat	POM
Leva / Handle	1.4301 (AISI 304)
Fermo inferiore / Lower washer	1.4301 (AISI 304)
Fermo Superiore / Upper washer	1.4301 (AISI 304)
Anello vite / Stern ring	POM
Spina / Spine	1.4301 (AISI 304)
Anello seeger / Component	1.4301 (AISI 304)
O-ring adattatori / Adapter o-ring	NBR
O-ring vite / Stern o-ring	NBR
Vite / Screw	DIN 6921 A2

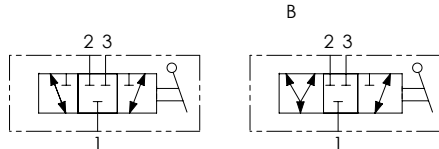


Caratteristiche tecniche - Technical characteristics

Tipo Type	A	Portata max Max flow l/min-USgpm	Pressione max Max pressure bar-PSI	B	C	E	F	G	H	L	M	R	S	Peso approssimativo Approx weight kg-lb
XRAS2140	BSPP 1/4	25 (6.6)		42,4 (1.67)	30 (1.18)		35 (1.38)	14,5 (0.57)		91,5 (3.60)	71 (2.80)	4,5 (0.18)	34 (1.34)	0,5 (1.1)
XRAS2380	BSPP 3/8	35 (9.2)	500 (7250)	44,4 (1.75)	35 (1.38)	110 (4.33)	40 (1.57)	17,5 (0.69)	5,2 (0.20)	96,5 (3.80)	73 (2.87)			0,7 (1.5)
XRAS2120	BSPP 1/2	60 (15.8)		48,4 (1.91)	37 (1.46)		43 (1.69)	18 (0.71)		99,5 (3.92)	83 (3.27)	5 (0.20)	36 (1.42)	0,8 (1.8)
XRAS2340	BSPP 3/4	100 (26.4)	400 (5800)	62,5 (2.46)	45 (1.77)		55 (2.17)	23,5 (0.93)		106,5 (4.19)	95 (3.74)			1,5 (3.3)
XRAS2100	BSPP 1	150 (39.6)	350 (5075)	66,5 (2.62)	55 (2.17)	180 (7.09)	65 (2.56)	29,5 (1.16)	6,2 (0.24)	116,5 (4.59)	112 (4.41)	6 (0.24)	50 (1.97)	2,3 (5)



Schema idraulico - Hydraulic circuit

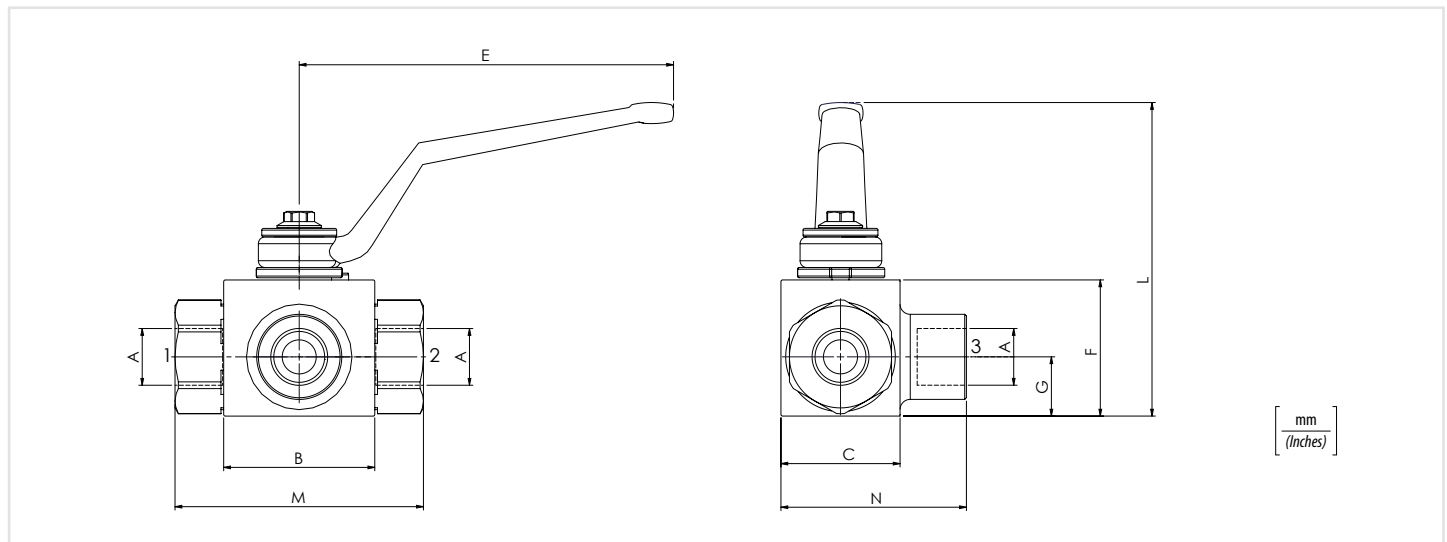
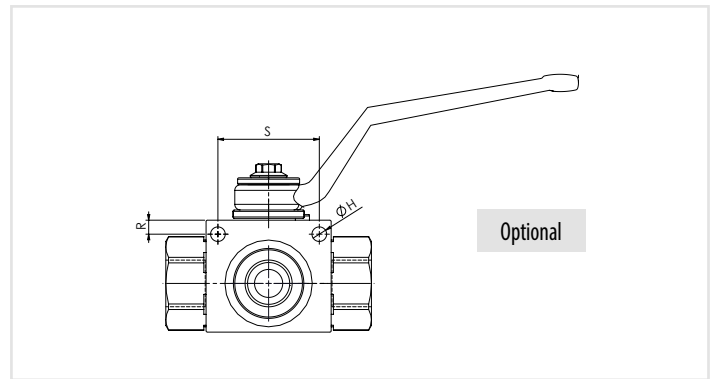


Codice ordinazione Ordering code	01	02	03
	XRAS3		

01	Valvole a sfera a 3 vie (3 ways ball valves)	XRAS3	
02	Dimensione (Size)	BSPP 1/4	140
		BSPP 3/8	380
		BSPP 1/2	120
		BSPP 3/4	340
		BSPP 1	100
03	Optional	Fori di fissaggio (Fixing ports)	P

Dati tecnici - Technical data

Particolare / Component	Materiale / Material
Corpo / Body	1.4404 (AISI 316L)
Adattatori / Adapter	1.4404 (AISI 316L)
Sfera / Ball	1.4404 (AISI 316L)
Vite regolatrice / Stern	1.4404 (AISI 316L)
Battuta sfera / Ball seat	POM
Leva / Handle	1.4301 (AISI 304)
Fermo inferiore / Lower washer	1.4301 (AISI 304)
Fermo Superiore / Upper washer	1.4301 (AISI 304)
Anello vite / Stern ring	POM
Spina / Spine	1.4301 (AISI 304)
Anello seeger / Component	1.4301 (AISI 304)
O-ring adattatori / Adapter o-ring	NBR
O-ring vite / Stern o-ring	NBR
Vite / Screw	DIN 6921 A2



Caratteristiche tecniche - Technical characteristics

Tipo Type	A	Portata max Max flow l/min-USgpm	Pressione max Max pressure bar/PSI	B	C	E	F	G	H	L	M	N	R	S	Peso approssimativo Approx weight kg/lb
XRAS3140	BSPP 1/4	25 (6.6)	400 (5800)	42,4 (1.67)	30 (1.18)	110 (4.33)	35 (1.38)	14,5 (0.57)	5,2 (0.20)	91,5 (3.60)	71 (2.80)	48,5 (1.91)	4,5 (0.18)	34 (1.34)	0,6 (1.3)
XRAS3380	BSPP 3/8	35 (9.2)		44,4 (1.75)	35 (1.38)		40 (1.57)	17,5 (0.69)		96,5 (3.80)	73 (2.87)	54,5 (2.15)	5 (0.20)	36 (1.42)	0,7 (1.5)
XRAS3120	BSPP 1/2	60 (15.8)	350 (5075)	48,4 (1.91)	37 (1.46)	180 (7.09)	43 (1.69)	18 (0.71)	6,2 (0.24)	99,5 (3.92)	83 (3.27)	58,5 (2.30)	6 (0.24)	50 (1.97)	0,8 (1.8)
XRAS3340	BSPP 3/4	100 (26.4)		62,5 (2.46)	45 (1.77)		55 (2.16)	23,5 (0.93)		106,5 (4.19)	95 (3.74)	75 (2.95)			1,6 (3.5)
XRAS3100	BSPP 1	150 (89.6)		66,5 (2.62)	55 (2.17)		65 (2.56)	29,5 (1.16)		116,5 (4.59)	112 (4.41)	87,5 (3.44)			2,4 (5.3)

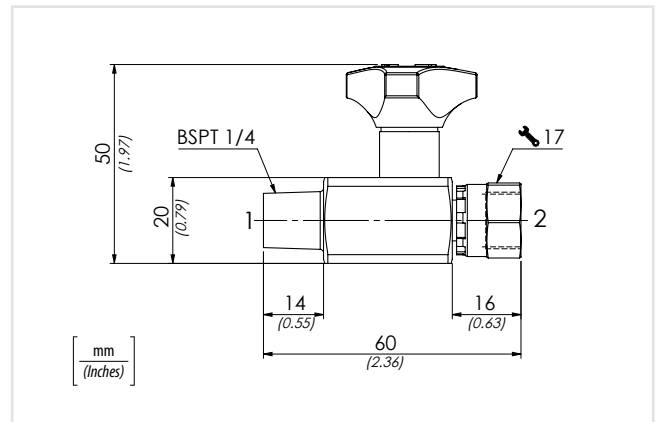
Rubinetti esclusive in linea protezione manometro

Pressure gauge in-line shut-off valves



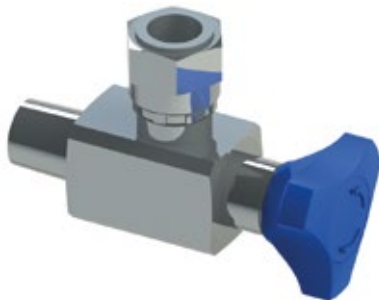
Codice ordinazione - Ordering code

XSOV1400



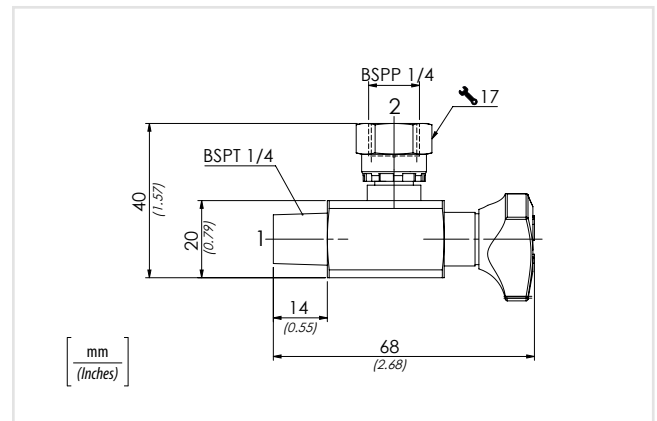
Rubinetti esclusive 90° protezione manometro

Pressure gauge 90° shut-off valves



Codice ordinazione - Ordering code

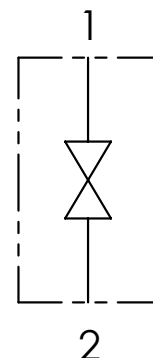
XSOV1490



Dati tecnici - Technical data

Particolare / Component	Materiale / Material
Corpo / Body	1.4404 (AISI 316L)
Adattatori / Adapter	1.4404 (AISI 316L)
Vite regolatrice / Stern	1.4404 (AISI 316L)
Volantino / Handknob	Plastica / Plastic
Guarnizioni / O-rings	Viton (FKM)

Schema idraulico - Hydraulic circuit





Codice ordinazione / Ordering code

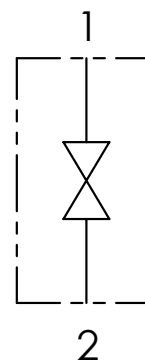
01	02
XMNP	

01	Miniprese prova pressione (Test couplings for pressure checking)	XMNP
02	Dimensione (Size)	BSPP 1/8
		BSPP 1/4
		BSPP 3/8
		BSPP 1/2

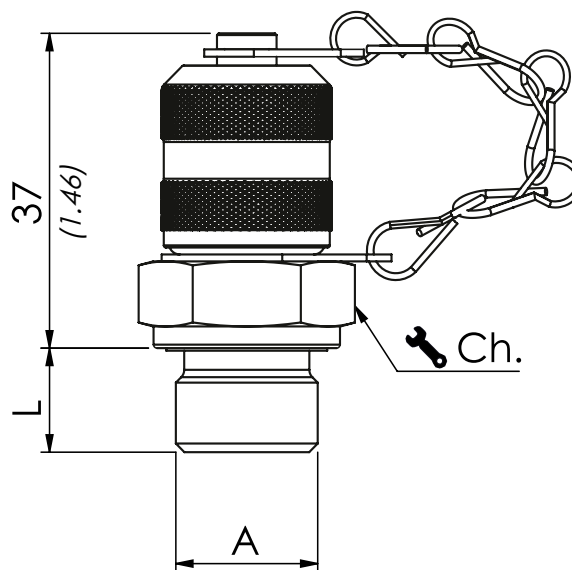
Dati tecnici - Technical data

Particolare / Component	Materiale / Material
Corpo / Body	1.4404 (AISI 316L)
Cappuccio di protezione / Safety cap	1.4404 (AISI 316L)
Guarnizioni / O-rings	Viton (FKM)

Schema idraulico - Hydraulic circuit



Miniprese - Test couplings M16x2



[mm
(Inches)]

Caratteristiche tecniche - Technical characteristics

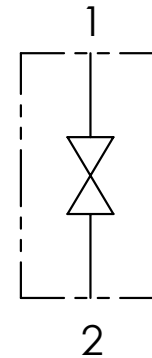
Tipo / Type	A	Pressione max / Max pressure bar/PSI	Ch. mm	L	Coppia di serraggio / Tightening torque Nm/lbf ft	Peso approssimativo / Approx weight kg/lb
XMNP180	BSPP 1/8	630 (9135)	17	8 (0.31)	20 (14.6)	0,07 (0.16)
XMNP140	BSPP 1/4		19	12 (0.47)	30 (22)	0,08 (0.18)
XMNP380	BSPP 3/8		22	12 (0.47)	60 (44)	0,10 (0.22)
XMNP120	BSPP 1/2		27	14 (0.55)	80 (58.6)	0,13 (0.29)



	01	02	03
Codice ordinazione Ordering code	XMNP		N

01	Miniprese prova pressione (Test couplings for pressure checking)	XMNP
02	Dimensione (Size)	NPTF 1/8
		NPTF 1/4
		NPTF 3/8
		NPTF 1/2
03	Filettatura NPTF (Nptf thread)	N

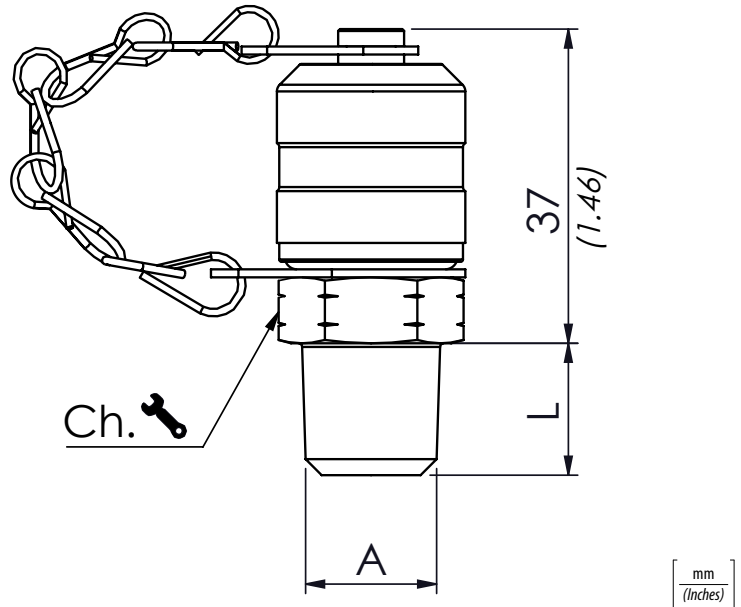
Schema idraulico - Hydraulic circuit



Dati tecnici - Technical data

Particolare / Component	Materiale / Material
Corpo / Body	1.4404 (AISI 316L)
Cappuccio di protezione / Safety cap	1.4404 (AISI 316L)
Guarnizioni / O-rings	Viton (FKM)

Miniprese - Test couplings M16x2



Caratteristiche tecniche - Technical characteristics

Tipo Type	A	Pressione max Max pressure bar/PSI	Ch. mm	L	Coppia di serraggio Tightening torque Nm/lbft	Peso approssimativo Approx weight kg/lb
XMNP180N	NPTF 1/8	630 (9135)	17	10 (0.39)	20 (14,6)	0,07 (0.16)
XMNP140N	NPTF 1/4		19	12 (0.47)	30 (22)	0,08 (0.18)
XMNP380N	NPTF 3/8		22	14 (0.55)	60 (44)	0,10 (0.22)
XMNP120N	NPTF 1/2		27	14 (0.55)	80 (58,6)	0,13 (0.29)

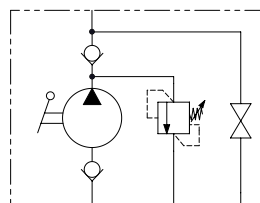


	01	02	03
Codice ordinazione Ordering code	XPMS		LRV

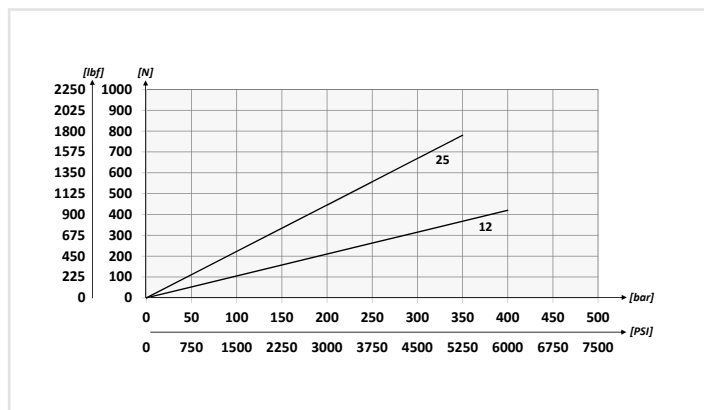
01	Pompa a mano doppio pompaggio per cilindro a semplice effetto (Double pumping hand pump for single acting cylinder)			XPMS	
02	Cilindrata (Displacement)	A	B	C	
	12 cm³ (0.73 in ³)	253 (9.96)	166 (6.54)	34 (1.34)	12
	25 cm³ (1.53 in ³)	273 (10.75)	172 (6.77)	34 (1.34)	25
03	Con rubinetto di scarico e valvola di massima pressione (With unloading valve and relief valves)			LRV	

La pompa viene fornita con leva di azionamento L=600 mm
The pump is supplied with acting lever 23.6 in long

Schema idraulico - Hydraulic circuit

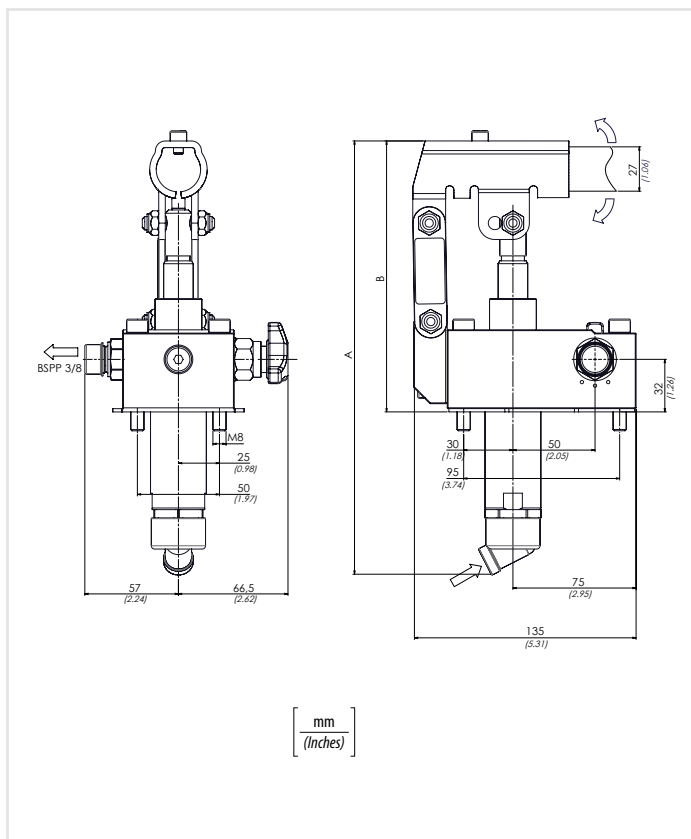


Sforzo esercitato all'estremità della leva - Effort operating at the end of the lever



Dati tecnici - Technical data

Particolare / Component	Materiale / Material
Corpo / Body	1.4404 (AISI 316L)
Stelo / Rod	1.4542 (AISI 630) + Niploy
Altri particolari / Other components	1.4404 (AISI 316L)
Guarnizioni / O-rings	NBR



Caratteristiche tecniche - Technical characteristics

Tipo Type	Pressione ottimale (bar) Optimal pressure (PSI)	Pressione max (bar) Max pressure (PSI)	Peso approssimativo (kg) Approx weight (lb)
XPMS12	220 (3190)	380 (5510)	3,7 (8.15)
XPMS25	120 (1740)	350 (5075)	

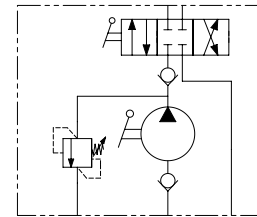


La pompa viene fornita con guarnizione sagomata + viti di fissaggio + leva di azionamento L=600 mm
 The pump is supplied with shaped seal, fixing screws and acting lever 23.6 inch long

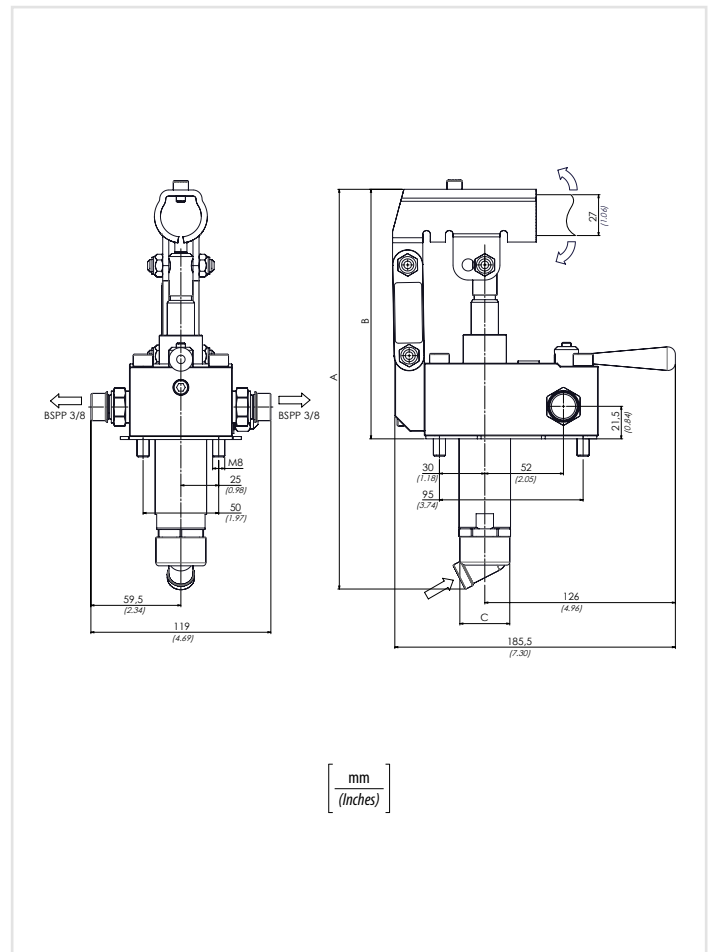
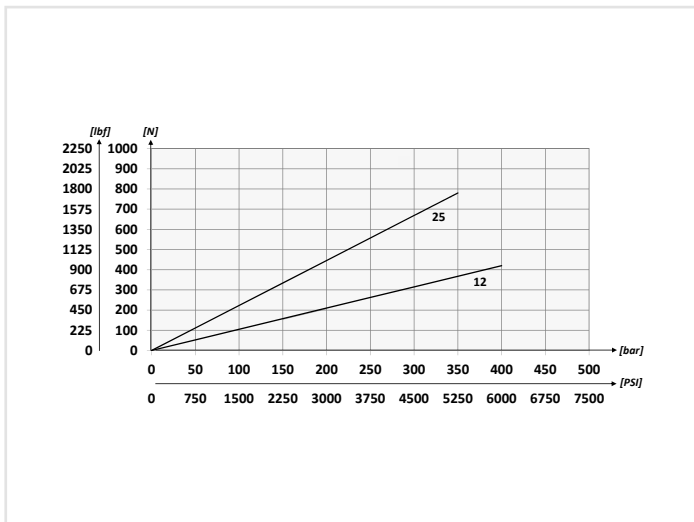
	01	02	03
Codice ordinazione Ordering code	XPMI		RV

01	Pompa a mano doppio pompaggio per cilindro a doppio effetto - centro chiuso (Double pumping hand pump for double acting cylinder - closed center)			XPMI	
02	Cilindrata (Displacement)	A	B	C	
	12 cm³ (0.73 in³)	253 (9.96)	166 (6.54)	34 (1.34)	12
	25 cm³ (1.53 in³)	273 (10.75)	172 (6.77)	34 (1.34)	25
03	Con valvola di massima pressione (With relief valves)			RV	

Schema idraulico - Hydraulic circuit



Sforzo esercitato all'estremità della leva - Effort operating at the end of the lever



Dati tecnici - Technical data

Particolare / Component	Materiale / Material
Corpo / Body	1.4404 (AISI 316L)
Stelo / Rod	1.4542 (AISI 630) + Niploy
Altri particolari / Other components	1.4404 (AISI 316L)
Guarnizioni / O-rings	NBR

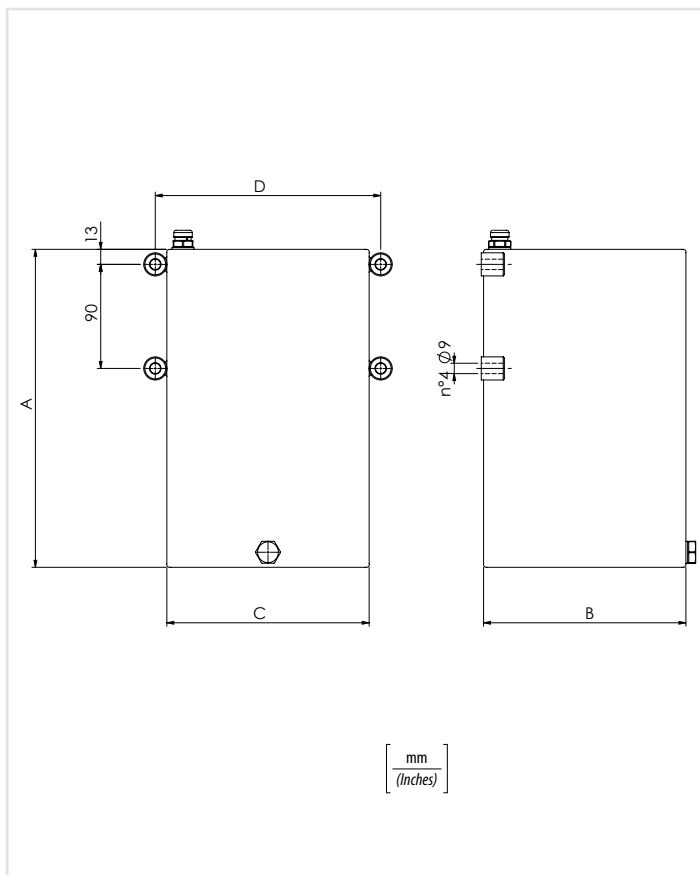
Caratteristiche tecniche - Technical characteristics

Tipo Type	Pressione ottimale (bar) Optimal pressure (PSI)	Pressione max (bar) Max pressure (PSI)	Peso approssimativo (kg) Approx weight (lb)
XPMI12	220 (3190)	380 (5510)	4,20 (9.25)
XPMI25	120 (1740)	350 (5075)	



Serbatoio in acciaio INOX 316,
Il serbatoio è comprensivo di tappo sfiato e tappo scarico

Steel reservoir INOX 316,
The reservoir is including the breather plug



01

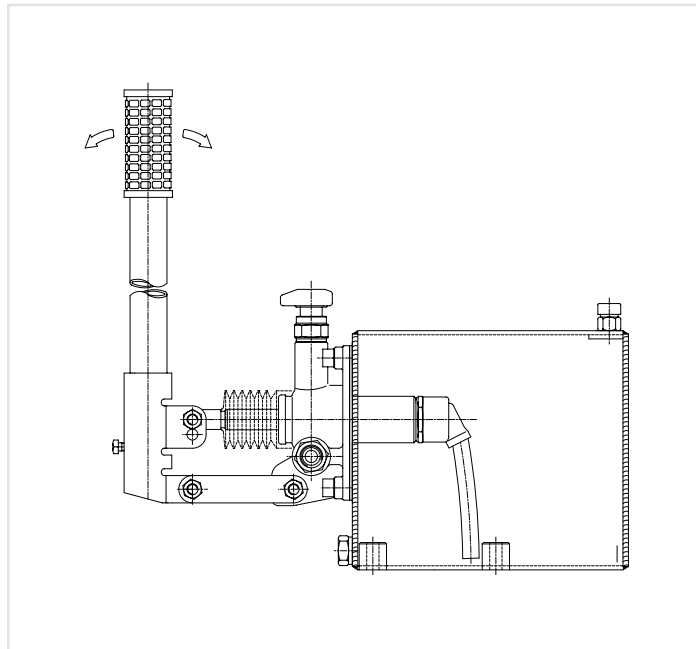
Codice ordinazione - Ordering code
Caratteristiche tecniche - Technical performances

	Tipo Type	Capacità Capacity	A	B	C	D	Peso approssimativo Approx weight kg/lb
01	XTNK1	1 Lt. - 61 in. ³	120 (4.72)	150 (5.91)	100 (3.94)	120 (4.72)	2,2 (5)
	XTNK3	3 Lt. - 183 in. ³	255 (10.04)				3,5 (7,71)
	XTNK5	5 Lt. - 305 in. ³	200 (7.87)	175 (6.89)	195 (7.68)	5 (10.9)	

Dati tecnici - Technical data

Particolare / Component	Materiale / Material
Corpo / Body	1.4404 (AISI 316L)

Montaggio orizzontale - Horizontal mounting



Montaggio verticale - Vertical mounting

