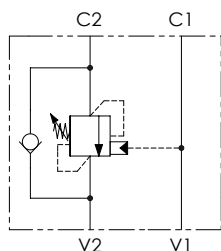
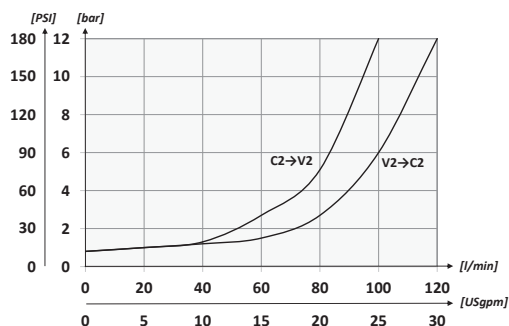


Schema idraulico - Hydraulic circuit



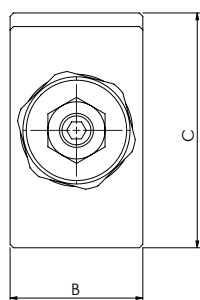
Performances



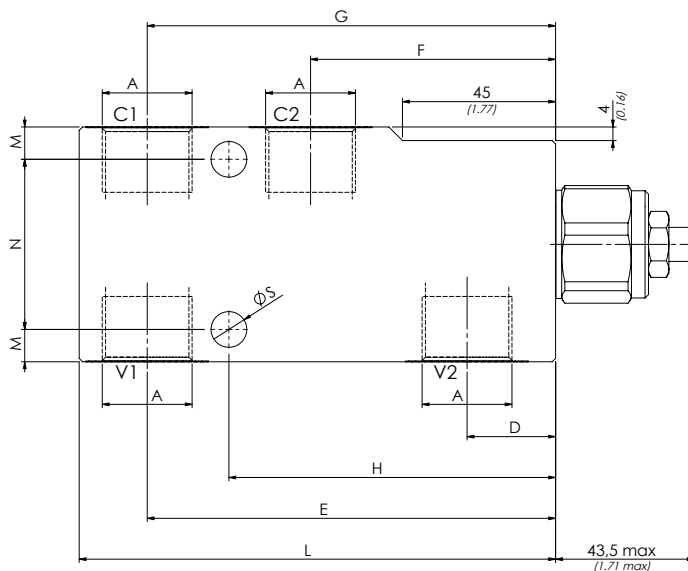
Codice ordinazione Ordering code	01	02	03	04	05
	VBCL	340	2	S	
01	Valvole di bilanciamento singole per centro aperto (Single counterbalance valves for open center)				VBCL
02	Dimensione (Size)		BSPP 3/4		340
03	Molla (Spring) 60/350 bar (870/5075 PSI)	Rp 1:6.2	Incremento pressione al giro (Press. increase) 143 bar/al giro (2074 PSI/turn)		Taratura standard (Std. setting) Q=5 l/min 350 bar (5075 PSI)
		Rp 1:10.6	Incremento pressione al giro (Press. increase) 242bar/al giro (3509 PSI/turn)		
04	Materiale (Material)		Corpo in acciaio + zincatura (Steel body + zinc-plated)		S
05	Rapporto di pilotaggio (Pilot ratio)		1:6.2		/
			1:10,6		11

Dati tecnici - Technical data

Olio idraulico/Mineral oil	ISO 6743/4 (DIN 51524)
Viscosità olio/Oil viscosity	15-250 mm²/s (15 to 250 cSt)
Classe di contaminazione max con filtro Max contamination index with filter	ISO 4406:1999 Classe 19/17/14
Temperatura dell'olio/Oil temperature	-20°C +80°C -4°F + 176°F
Temperatura ambiente/Ambient temperature	-20°C +50°C -4°F + 122°F
È indispensabile l'utilizzo di un filtro per proteggere la valvola (filtrazione consigliata 15 µm) It is necessary a filter use to protect the valve (advised filtration 15 µm)	



mm
(Inches)



Caratteristiche tecniche - Technical characteristics

Tipo Type	A	Portata max Max flow l/min-USgpm	Pressione max Max pressure bar/PSI	B	C	D	E	F	G	H	L	M	N	S	Peso approssimativo Approx weight kg/lb
VBCL340	BSPP 3/4	120 (31.7)	350 (5075)	39 (1.54)	69 (2.72)	20 (0.79)	94 (3.7)	72 (2.83)	120 (4.72)	96 (3.78)	140 (5.51)	9,5 (0.37)	50 (1.97)	10,5 (0.41)	2,54 (5.59)