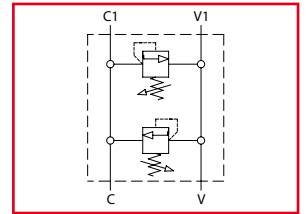


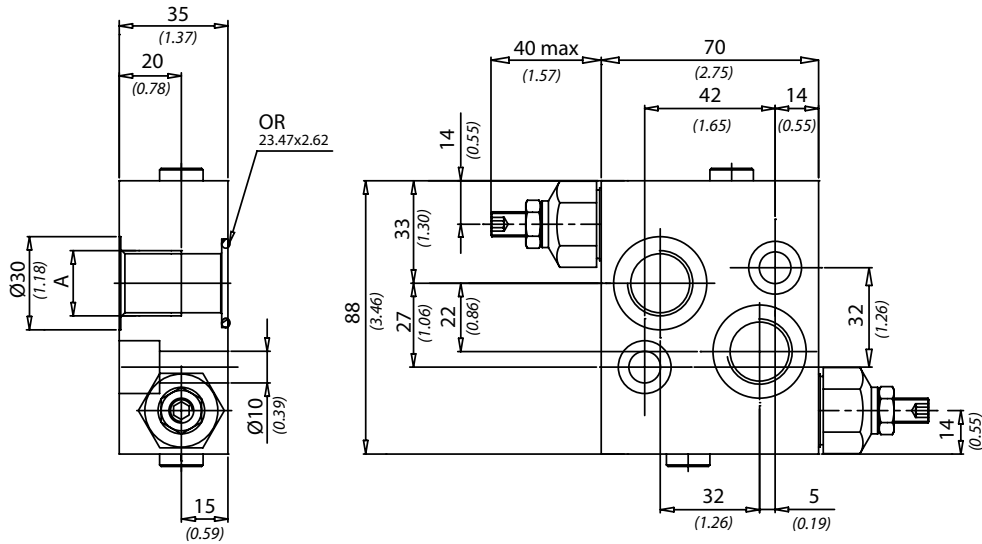
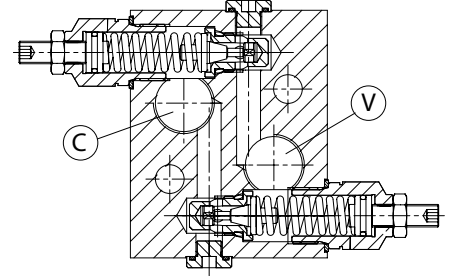


# DCM

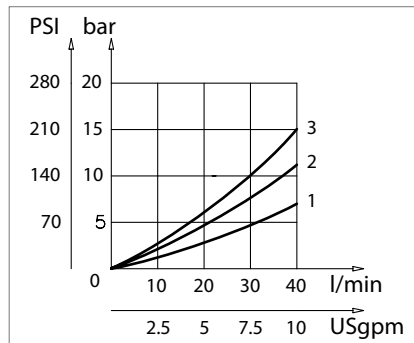
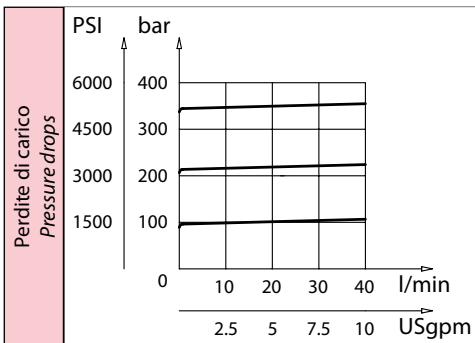
Valvola antiurto doppie incrociate  
Double cross line direct acting relief valves



Dati tecnici Technical data	
Viscosità fluido Fluid viscosity	10-500 mm <sup>2</sup> /s 45 to 2000 ssu (6 to 420 cSt)
Classe di contaminazione Filtration	ISO code 16/13 SAE class 4 or better
Temperatura fluido Fluid temperature	-20°C +80°C -4°F +176°F
Temperatura ambiente Ambient temperature	-20°C +50°C -4°F +122°F



mm  
Inches



Caratteristiche tecniche Technical performances					
Code Code	A	Portata Max Max flow l/min - USgpm	Pressione Max Max pressure bar/PSI	Peso approssimativo Approx weight Kg / lb	Valvola tipo Type of valve
DCM120	BSPP 1/2	40 (10.5)	350 (5000)	1,5 (3.3)	VMD40
DCM7814	7/8 - 14 UNF				
DCM2215	M22 x 1,5				

Codice ordinazione Ordering code			
DCM - X - Y - K			
X	Dimensione / Size	K	Cappuccio in plastica Safety cap
120	BSPP 1/2	s	
7814	7/8 - 14 UNF		
2215	M22x1.5		
Y	Molla / Spring		
1	100 bar (1450 PSI) max		
2	210 bar (3000 PSI) max		
3	350 bar (5000 PSI) max		