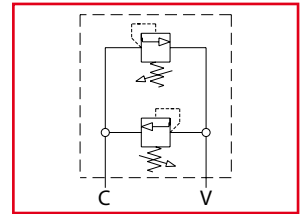


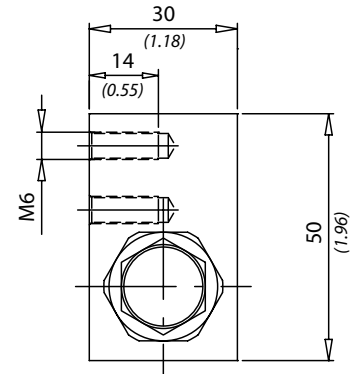
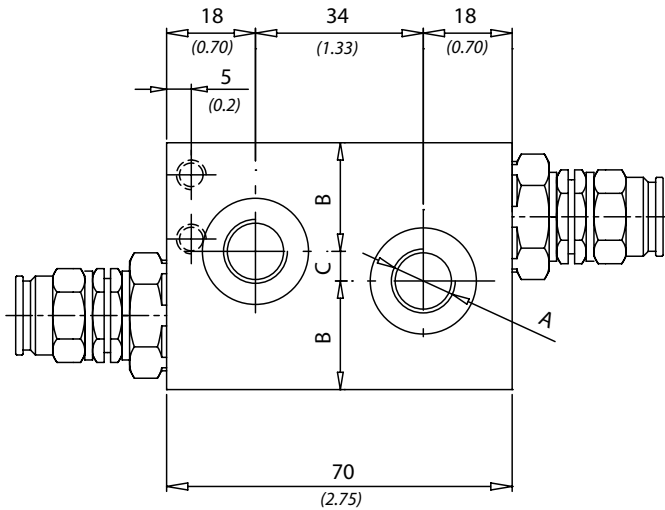
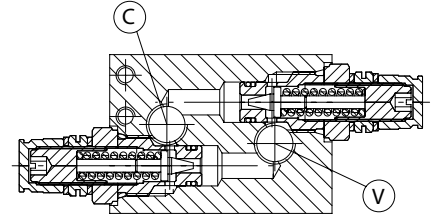


DCA

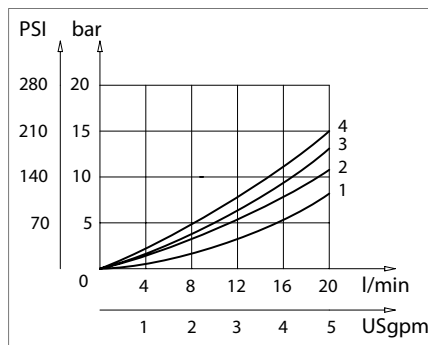
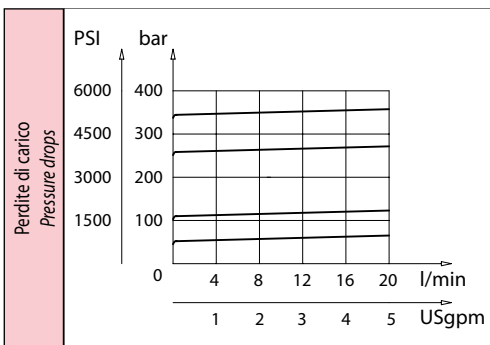
Valvole antiurto doppie incrociate
Double cross line direct acting relief valves



Dati tecnici Technical data	
Viscosità fluido Fluid viscosity	10-500 mm ² /s 45 to 2000 ssu (6 to 420 cSt)
Classe di contaminazione Filtration	ISO code 16/13 SAE class 4 or better
Temperatura fluido Fluid temperature	-20°C +80°C -4°F +176°F
Temperatura ambiente Ambient temperature	-20°C +50°C -4°F +122°F



mm
Inches



Caratteristiche tecniche Technical performances							
Codice Code	A	Portata Max Max flow l/min - USgpm	Pressione Max Max pressure bar/PSI	B	C	Peso approssimativo Approx weight Kg / lb	Valvola tipo Type of valve
DCA140	BSPP1/4	20 (5.3)	350 (5000)	22 (0.87)	6 (0.24)	0,8 (1.8)	VMD1
DCA380	BSPP 3/8			20 (0.79)	10 (0.39)		

Codice ordinazione Ordering code			
DCA - X - Y			
X	Dimensione / Size	Y	Molla / Spring
140	BSPP 1/4	1	40 bar (580 PSI) max
		2	110 bar (1600 PSI) max
380	BSPP 3/8	3	250 bar (3600 PSI) max
		4	350 bar (5000 PSI) max